

MINUTES

Minutes of Presidents Meeting 7/3/2017 at Labrador Community Centre

Commenced at 6.35pm

Apologies: Brad Hollis Director, Josh Brookes Mudgeeraba President

Attendance: Refer to attached Attendance Sheet

Ref	Detail	Action Point	Notes/Discussion comments
	Welcome		PG
1. PG	<p>Minutes of Last meeting:</p> <p>Action items from last meeting – Update of the Financial Report -Audit</p> <p>In coming correspondence</p> <p>Outgoing correspondence</p>		<p>PG requested acceptance of minutes -Moved Scott Beasley (SB), Seconded Wendy Pearce (WP)</p> <p>SB apologised for Labrador not providing team numbers.</p> <p>1. Mudjee Hockey Club re full field for training – Discussed at point 12</p> <p>1. Capri Sharks re butting invoices for In-Schools programme amount is \$2642 – Meeting to discuss TBC</p> <p>No outgoing correspondence</p>
2.	Financials	<p>SS to ensure Financials are with the Presidents prior to the final Agenda so that items for clarification can be researched to ensure the correct response.</p> <p>CLUBS: It is anticipated that this process will ensure the Treasurer and the Board can respond accurately to questions</p>	<p>SS Presented P&L, BS, AP and AR. P&L shows current YTD dr of \$10k.</p> <p>Troy Nunan requested Forecast – Treasurer declined to produce a forecast for GCHA.</p> <p>PG supports a PHI forecast.</p> <p>2016 Audit has been received – Final Closing entries are to be completed to accounts</p>

		emanating from the Financial Reports	
3.	Insurance issues		CR Advised that Insurance is a mandatory cost imposed by HA and HQ at \$8 per player. Extra cover is available from members private Health Insurance, but if players have Private Health it all but negates the insurance policy T&C's
4.	Grant update	CR: GCBF to be applied for Financials will be provided week prior.	Mudgee and GCHA have GG grants approved. GCHA have a GCBF grant application pending. Capri, Mudgee & PHI can access the next round of GCBF applications
5.	GCHMG update		<p>Scott Beasley, Col Rawding (CR) and Paul Gasmier CR advised the structure, SB provided whiteboard showing links (see attached photo) Confirmed members are 2 x GCHA, 2 x Labrador, 3 x HQ. This structure was imposed by Gold Coast Council due to Labrador wanting to retain some ownership of the site from their long-standing development of Hockey.</p> <p>Structure changes after Cwlth games in 2018 with 3 Independent members being appointed to GCHMG as HQ pull-out.</p> <p>If GCHMG increase sinking fund, then they will return to GCHA via lower usage fees.</p> <p>SB will forward GCHMG Constitution for GCHA Presidents and other Board members. Labrador have first use rights over Eastern Field, Labrador have area of Bar as their Clubhouse – they have a lease over this space. Labrador pay the competition fees to GCHA who on pays to GCHMG. Labrador pay their training fees direct to GCHMG. Labrador have been guaranteed 403 hours' field use and GCHA have approx. 1100 hours' field use. These numbers were based on previous training times.</p>

		<p>ALL See 13 below for options</p>	<p>Brendan Karl requested clarification if GCHA ends up insolvent. – The consensus from GCHMG was that the Council would not assist financially, but would aid GCHA. The Association Incorporation Act covers the legal requirements if this happens to GCHA.</p> <p>New Handover date is approx. 31/3/2017 for precinct, possibly 17/3/2017 for Buildings. Comments re netting on Eastern turf (7m high) and the Western Balustrade and for training when goals on side fence (6m high). The South western training circle requires more design work to reduce the chances of damaging any glass balustrade. Contractor still to finalise concreting, landscaping and perimeter fencing.</p> <p>Grass fields will not be available until work commenced in 2018 so 2019 season. Gold Coast Council will redevelop 2 areas with irrigations etc. GCHMG as Facility Manager can and will host other events at the facility. It is not solely for a Hockey competition.</p> <p>Rod Gibb commented re increase in fees. The Board advised that the competition fee increase is not related to the Facility.</p> <p>General discussion around availability during season with period out for Hockey days' comp, Uni games.</p> <p>Possible season start is after Easter – The board will be endeavouring to complete a full 2017 season & will be looking at options to do so such as games during the week, start Junior earlier – all still open for input and suggestions from Clubs.</p> <p>Discussion re Junior games due to lack of grass fields.</p>
6. PG	Club Days	<p>GCHA ADMIN to put events Calendar on Website by 13/3/2017 (GCHA Admin)</p>	<p>2 per club.</p> <p>Presidents suggested that a Calendar on the GCHA website would assist them in booking requests for club days.</p>

		CLUBS: Clubs to send in dates by 23/3/17	
7. CR	Intercity		CR. Capri have pulled out men & women; Labrador have pulled out of women Confirmed Mudjee, Roosters & 2 Burleigh (F) teams. Due to Tweed unable to engage their teams feedback, the competition format will remain the same for 2017.
8.	Fair Game Days - Protocol	SS: attached Fair game day rules at end of this document	SS 1 in Round 8 and round 16 approximately. Refer to attached protocol which was forwarded to clubs 1/3/17 via email
9.	RSC 13 Mar	CR advise RSC of time change GCHA Admin to send out reminder with time details	CR Next RSC Governance session is Monday 13/3/17 at 6.30pm at Labrador. Clubs are expected to have 2 members attend preferably including the President so that agreement can be reached on various suggestions on the night.
10.	EOI Competitions Director	GCHA ADMIN: EOI to be forwarded to Clubs	Brad Hollis has vacated the position of Competitions Director. Position will be available for a period from now to end of GCHA financial year on 30/9/2017. Presidents have no issue with member from the same clubs being on the Board, rather they want someone with the commitment and skill set to run the portfolio. This may not be easily achievable as it is dependent on nominations received.
11.	GCHMG \$20,000.00 loan	PG & CR: Repayment dates need to be set into the Agreement commencing 2018 season	PG advised of GCHA loan of \$20k to GCHMG and the terms of no interest over 2 years. HQ and Labrador are also providing \$20k Loans. Repayment will be via turf hire fees.
12.	Mudjee/Capri training	CB to look at moving Rep training to Runaway Bay on Monday nights to free up some time. Mudjee to discuss junior training availability with Labrador	Mudjee request to have full field for training due to increased numbers. Comments back and forth return availability dates, rotation thru Runaway Bay. Capri stated they would not go to Runaway Bay. Other clubs were not fully opposed to that suggestion, but this options reduces the training fees to GCHMG which in turn could increase the costs to GCHA. Also, the loss of business via the bar/canteen

13.	Junior overflow for Competition on Saturdays	ALL to consider and express any other suggestions to accommodate Juniors at one field.	No grass fields. CR presented options such as split use between Venue and Runaway Bay, staggered hours between games for this option were also mentioned to allow travel. Div. 3 to early Sunday morning 8am start and/or extend through to 7.30pm finish Sunday's, Junior Saturday morning to first 2 senior timeslots and later games times on Saturday night for Div. 3 & 4. Senior
14.	General/New Business	SS to correspond with JB	Jeanette Barnard (JB) availability in 2017. Brad Hollis had previously advised that he did not receive a response to his email to Jeanette. Appears that Jeanette did not receive the emails.
15.		CB : Finalise the document. Clarification required on who drives the completion of the form i.e. player or releasing/receiving Club	CB presented the player transfer form – general discussion around Poaching of players and resolutions to stop this – no real consensus on appropriate measures to restrict this activity as everybody blames everybody but claims innocence when they are accused of the tactic.
16.			
Meeting ended 9:30pm. Next Meeting Monday 10 April 2017. Venue to be advised			



AGENDA

PRESIDENTS MEETING – 06/03/17 -Labrador Community Centre 6.30.PM

Ref	Detail	Speaker
	Welcome	Paul Gasmier

Attendance Record

1.	Minutes of Last meeting: Action items from last meeting – Update of the Financial Report -Audit In coming correspondence Outgoing correspondence	Paul Gasmier
2.	Financials	Sioux Sharpe
3.	Insurance issues	
4.	Grant update	
5.	GCHMG update	
6.	Club Days	
7.	Intercity	
8.	Fair Game Days - Protocol	
9.	RSC 13 Mar	
10.	EOI Competitions Director	
11.	GCHMG \$20,000.00 loan	
12.	Mudgee/Capri training	
13.	Junior overflow for Competition on Saturdays	
14.	General/New Business	All
15.		
16.		

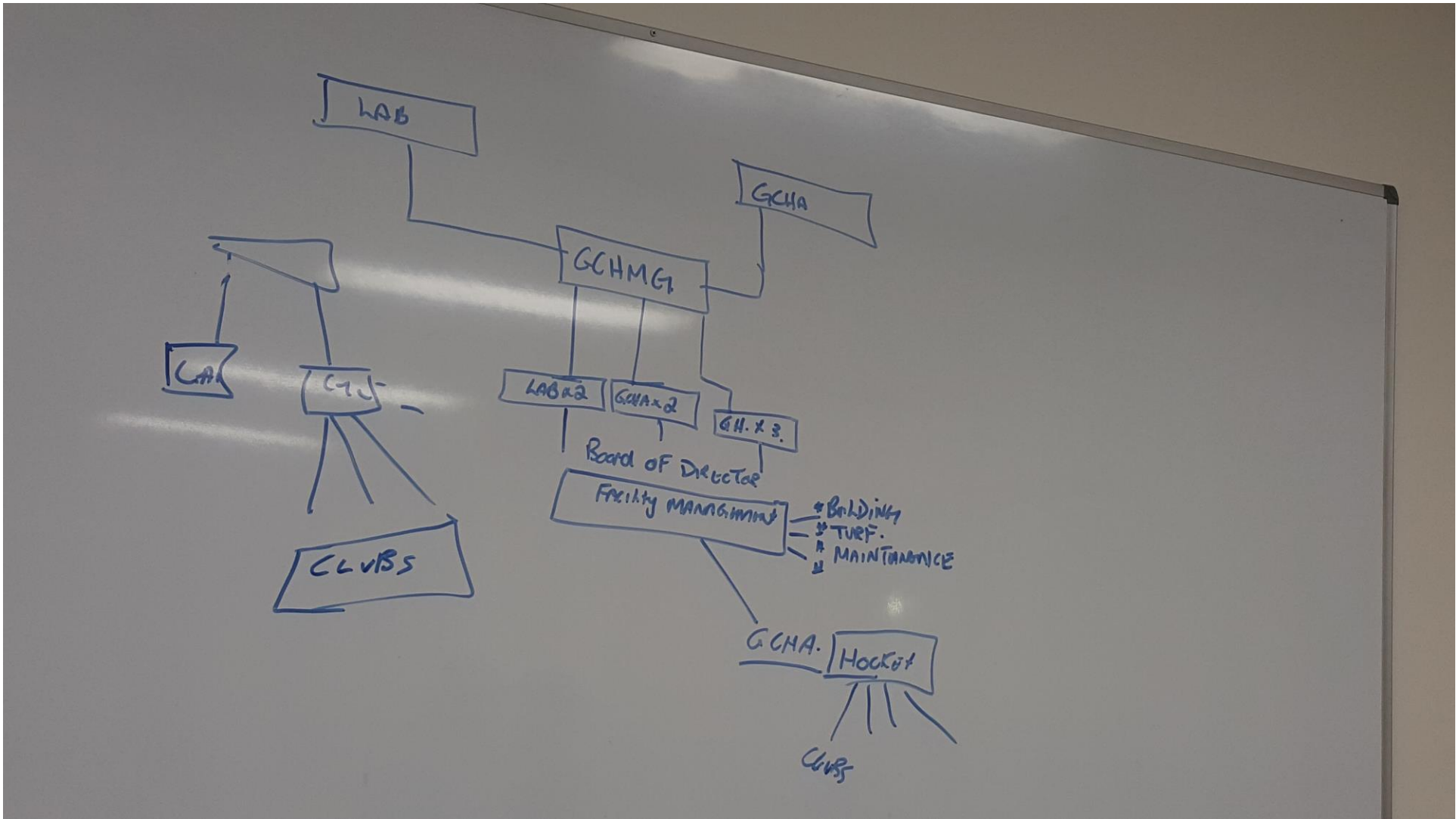
6.30 to 9.30pm



PRESIDENT'S MEETING ATTENDANCE SHEET

Meeting on: Monday 6/3/2017
Labrador Community Centre

Name:	Club/Position:	Signature:
LISA BOULTON	JUDGEE SECRETARY	
WENDY PEARCE	CAPRE PRESIDENT	
Scott Beasley	Lab.	
Col. RALPHING	DIRECTOR	
Brendon Kael	ROOSTERS PRESIDENT	
IAN HOOD	ROOSTERS	
VICAR FINLAYSON	ALLSTARS	
RED SHIBB	ALLSTARS	
CAMC BIGHAM.	DIRECTOR.	
PAUL GORMIER	PRESIDENT	
TROY NUNAN	Hockey Buteigh	
SShaippe	Director	



Fair Game Days GCHA Protocol

Fair Club Days will be played in Round 8 & 16 of the 2017 competition. These dates will be confirmed once we have the commencement date of our 2017 season.

FAIR CLUB DAYS

Fair Club Days are to encourage and support good sportsmanship from all players to each other, umpires, spectators & technical staff.

The GCHA Board requests team coaches, captains and managers to reinforce the code of conduct & the umpires also reinforce the initiative, prior to each game, to both teams.

After the w/e fixtures we announce the 'Fair Game Club' based on the club's overall performance across the weekend.

Just Hockey vouchers for the club will be awarded plus a certificate or similar for the successful club.